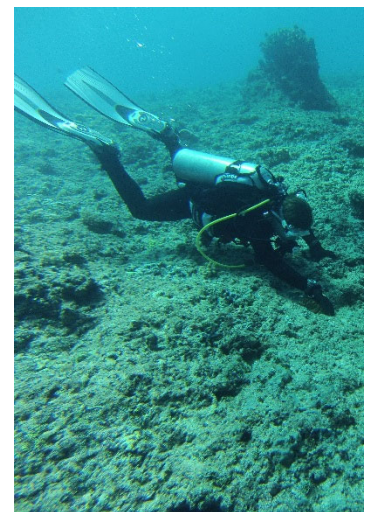




GSI is an experienced environmental services contractor possessing the technical capability and proven experience to address a wide array of environmental services. Since our founding, we have completed projects for the USACE, Honolulu, Albuquerque, Sacramento, and Omaha Districts; NAVFAC Pacific, Hawaii and Marianas; National Marine Fisheries; National Park Service; San Pasqual Band of Indians; Federal Energy Regulatory Commission; as well as private sector clients.

We achieve technical excellence through thorough research, meticulous data gathering and analysis, attention to details, and stringent quality control. GSI's environmental professionals are well versed in all aspects of the regulatory process and provide turnkey environmental services from remedial investigations/feasibility studies (RI/FS) through remedial design/remedial action (RD/RA), including long term monitoring (LTM), remedial system operation and maintenance (O&M), and process optimization. We provide project management personnel, engineers, environmental scientists, biologists, hydrogeologists, geologist, chemists, and quality and safety personnel for any project to meet our clients' needs.



## SERVICES

- ★ Planning and Engineering
- ★ Regulatory Compliance and Coordination
- ★ Risk Assessments
- ★ Soil and Groundwater Modeling/Monitoring
- ★ Solid and Hazardous Waste Management
- ★ Air Pollution Control
- ★ Pollution Prevention
- ★ Geodatabase Design, Geospatial Characterization and 3-D Geophysical Mapping Using GIS Application
- ★ Emerging Contaminant Investigation and Remediation
- ★ Environmental Baseline Surveys
- ★ Site Investigations
- ★ Environmental Assessments (EA) And Environmental Impact Statements (EIS)
- ★ Remedial Investigations and Remedial Design
- ★ Water and Wastewater Planning and Design
- ★ Underground Storage Tank (UST) Removal and Closure
- ★ Lead and Asbestos Surveys and Abatement
- ★ Bench and Pilot Testing

## Points of Contact:

Chad Henry  
VP, Environmental Programs  
703-944-2343  
chenry@gsisg.com

Michael Coyle  
Chief Growth Officer  
808-349-3178  
mcoyle@gsisg.com

# ENVIRONMENTAL SERVICES

## Representative Projects

### Makua Military Reservation Live Fire Training Area Supplemental Marine Resources Study

**Role:** Prime Contractor

**Location:** Makua Military Reservation, Oahu, HI

**Client:** U.S. Army Engineer Research and Development Center (ERDC)

**Contract Value:** \$171,199

**Scope:** Marine resources investigation to determine if marine plant and animal biota consumed by community members contained any chemical contaminants from active range related activities that posed an unacceptable human health risk. GSI also performed sampling for a long-term groundwater monitoring system and storm water flow monitoring.

### PROJECT HIGHLIGHTS

GSI collected over 144 marine biota samples from three locations offshore from the Makua Military Reservation. Because of the credibility and experience of GSI's personnel, the Army had us support their regulatory agency and community relations efforts including inviting community and regulatory agency members to the field to observe collection and handling of biota samples and supporting its public meetings. GSI utilized local commercial fishermen who typically sold biota to residents for consumption (known as knowledgeable by the community) and trained them in the data quality objectives.

### Long-Term Maintenance and Monitoring / Remedial Action Operations at the Former Naval Air Station Agana (Tiyan) Landfill

**Role:** Prime Contractor

**Location:** Naval Air Station Agana, Guam

**Client:** NAVFAC Pacific

**Contract Value:** \$106,444

**Scope:** Post-Removal Action Maintenance and Monitoring (PRAMM) to include landfill cover inspections and maintenance, settlement monitoring, landfill gas monitoring, and sampling of groundwater and drinking water to include sampling and analysis for emerging contaminants Perfluorooctanoic Acid (PFOA) and Perfluorooctane Sulfonate (PFOS).

### PROJECT HIGHLIGHTS

GSI performed sampling and analysis for emerging contaminants, specifically PFOS and PFOA. GSI reviewed historical documents to identify potential sources or practices at the site that may have contributed to the occurrence of PFOA/PFOS in groundwater. Due to its ubiquitous presence in a variety of commercial and consumer products, PFOA/PFOS-specific sampling procedures/equipment to avoid cross-contamination were incorporated into the project Sampling and Analysis Plan.

### OB South Pad Closure at Munitions Treatment Facility (MTF)

**Role:** Prime Contractor

**Location:** Yuma Proving Ground (YPG), AZ

**Client:** USACE, Albuquerque District

**Contract Value:** \$1.7M

**Scope:** OB South Pad Closure at the MTF conducted in accordance with RCRA. Work includes performing complete characterization sampling for the OB South Pad and surrounding soils; removal of concrete pad, line, burn pan refractory brick, sump and sump plumbing, and any contaminated soil; and preparing and obtaining a RCRA Class 1 Permit Modification for the closure of the inactive OB unit.

### PROJECT HIGHLIGHTS

While conducting normal dust monitoring duties and observation of stockpiling of bed fill, GSI's Safety Manager noticed blue metallic aluminum. After further investigation, he discovered rust objects and munitions debris (MD) was uncovered. GSI immediately notified the YPG Escort, stopped work and secured the area. GSI was granted a field change request to remove MD by mag and dig operations of the excavated bedding material and bedding material remaining within the excavation with a magnetometer.